

PERLES®

CHALLENGE OF PROFESSIONALS



CATALOGUE 2013/2014

Perles. Challenge of professionals.

Partner to Professionals since 1936

The Perles brand name was established in 1936 in Switzerland, when Rudolf Weber established company Perles AG and developed the first electromotor. Today product development and production take place in Slovenia. We are proud that also our distinguished strategic partners, beside professional users in the building and metalworking industries, trust in the quality of our products.

Building and metalworking industries

The vision of our brand name is to make it become the first choice for professionals in the building and metalworking industries. The development of highly specialized power tools is provided by long-lasting development experience, cooperation with professional users, and production equipped with modern technology.

3-Year Warranty

Perles products have a 3-year warranty, which can be claimed when you register on our website www.perles.com.

Professional After-Sales Service Network

We have authorized service workshops all over the world where qualified professionals provide high-quality repairs of Perles products. After-sales service information is available on our web site www.perles.com.

INDEX



page 4



page 5



page 6



page 6



page 7



page 7



page 9



page 10



page 10



page 11



page 11



page 12



page 13



page 15



page 16



page 16



PERCUSSION DRILLS



• Power tools made in EU

- Durable electromotor with dust protection of the motor winding
- Gear housing made of aluminum alloy provides high stiffness and long life
- Electronic switch with adjustable speed
- 2 mechanical gears for optimum adaptation of the speed and torque drilling requirements
- Reverse rotation via rotating carbon brushes for direction change - longer service life and higher motor power
- Spindle lock for quick change of accessories in a keyless chuck
- Rubber coating of the main handle provides very good grip of the machine
- Safety clutch at stronger drills (1000 W and 1200 W) protects the user from damage and the elements of drill from overload or even break
- Non-vibrating drill (PB9) endures large axial loads and are suitable for use in drill stands
- Drill PB9-713 HTS is a high torque drill designed for drilling of large diameter holes in wood and wooden structures or screwing. large diameter wood screws
- A large range of different power for different uses
- Rubber cord made in EU provides a long service life even in increasing number of bending/folding



SRE 4-713

Rated power 650 W, Reverse action, Electronic switch, No load speed 0-2.400 min⁻¹, Percussion rate 0-38.400 min⁻¹, Drilling capacity: in steel Ø 10 mm, in concrete Ø 15 mm, in wood Ø 30 mm, Weight 1,6 kg

010 005 076



PSB 9-713

Rated power 750 W, Electronic switch, L/R, No load speed: 1st gear 0-1.200 min⁻¹, 2nd gear 0-3.200 min⁻¹, Chuck size Ø 13 mm, Drilling capacity: in steel Ø 13 mm, in concrete Ø 20 mm, in wood Ø 40 mm, Weight 2,5 kg

010 004 917



PSB 9-713S

Rated power 750 W, Electronic switch, L/R, No load speed: 1st gear 0-1.200 min⁻¹, 2nd gear 0-3.200 min⁻¹, Keyless chuck Ø 13 mm, Drilling capacity: in steel Ø 13 mm, in concrete Ø 20 mm, in wood Ø 40 mm, Weight 2,7 kg

010 004 874



PSB 9-1013

Rated power 1.050 W, Electronic switch, L/R, No load speed: 1st gear 0-1.500 min⁻¹, 2nd gear 0-3.500 min⁻¹, Chuck size Ø 13 mm, Drilling capacity: in steel Ø 16 mm, in concrete Ø 20 mm, in wood Ø 40 mm, Weight 2,9 kg

010 004 916



PSB 9-1013S

Rated power 1.050 W, Electronic switch, L/R, No load speed: 1st gear 0-1.500 min⁻¹, 2nd gear 0-3.500 min⁻¹, Keyless chuck size Ø 13 mm, Drilling capacity: in steel Ø 16 mm, in concrete Ø 20 mm, in wood Ø 40 mm, Weight 2,8 kg, **Safety clutch**

010 004 931



PSB 9-1213

Rated power 1.200 W, Electronic switch, L/R, No load speed: 1st gear 0-1.600 min⁻¹, 2nd gear 0-3.700 min⁻¹, Chuck size Ø 13 mm, Drilling capacity: in steel Ø 16 mm, in concrete Ø 20 mm, in wood Ø 40 mm, Weight 3,0 kg, **Safety clutch**

010 004 921



PSB 9-1213S

Rated power 1.200 W, Electronic switch, L/R, No load speed: 1st gear 0-1.600 min⁻¹, 2nd gear 0-3.700 min⁻¹, Keyless chuck size Ø 13 mm, Drilling capacity: in steel Ø 16 mm, in concrete Ø 20 mm, in wood Ø 45 mm, Weight 3,0 kg, **Safety clutch**

010 004 875



PSB 9-1213SS

Rated power 1.200 W, Electronic switch, L/R, No load speed: 1st gear 0-1.600 min⁻¹, 2nd gear 0-3.700 min⁻¹, Keyless chuck size Ø 13 mm, Drilling capacity: in steel Ø 16 mm, in concrete Ø 20 mm, wood Ø 45 mm, Weight 3,4 kg, **Safety clutch**

010 004 938



PSB 9-1216

Rated power 1.200 W, Electronic switch, L/R, No load speed: 1st gear 0-1.100 min⁻¹, 2nd gear 0-2.100 min⁻¹, Keyless chuck Ø 16 mm, Drilling capacity: in steel Ø 16 mm, in concrete Ø 20 mm, in wood Ø 45 mm, Weight 3,0 kg, **Safety clutch**

010 004 939



PSB 9D-1213

Rated power 1.200 W, Electronic switch, L/R, No load speed: 1st gear 0-1.100 min⁻¹, 2nd gear 0-2.100 min⁻¹, Chuck size Ø 13 mm, Drilling capacity: in steel Ø 16 mm, in concrete Ø 35 mm, in wood Ø 50 mm, Weight 3,3 kg, **Safety clutch**

010 004 876



PSB 9D-1213S

Rated power 1.200 W, Electronic switch, L/R, No load speed: 1st gear 0-1.100 min⁻¹, 2nd gear 0-2.100 min⁻¹, Keyless chuck Ø 13 mm, Drilling capacity: in steel Ø 16 mm, in concrete Ø 35 mm, in wood Ø 50 mm, Weight 3,3 kg, **Safety clutch**

010 004 974

DRILLS



B 9-710

Rated power 750 W, Electronic switch, L/R, No load speed 0-3.200 min⁻¹, Chuck size Ø 13 mm, Drilling capacity: in wood Ø 25 mm, in steel Ø 10 mm, Torque 14,4 Nm, Weight 1,6 kg

010 005 045



PB 9-713

Rated power 750 W, Electronic switch, L/R, No load speed: 1st gear 0-1.200 min⁻¹, 2nd gear 0-3.200 min⁻¹, Chuck size Ø 13 mm, Drilling capacity: in steel Ø 13 mm, in wood Ø 40 mm, Weight 2,5 kg

010 004 907



PB 9D-1216

Rated power 1.200 W, Electronic switch, L/R, No load speed: 1st gear 0-1.100 min⁻¹, 2nd gear 0-2.100 min⁻¹, Chuck size Ø 16 mm, Drilling capacity: in steel Ø 16 mm, in wood Ø 50 mm, Weight 3,5 kg, **Safety clutch**

010 004 877

ANGLE DRILL



HBW 18

Rated power 500 W, No load speed 1.000 min⁻¹, Chuck size Ø 10 mm, Drilling in steel Ø 10 mm, Weight 2,6 kg

010 004 837

ELECTROPNEUMATIC HAMMER



PBH 826

Rated power 800 W, SDS+, Electronic switch, L/D, Impact energy 3,2 J, No load speed 0-1.100 min⁻¹, Percussion rate 0-5.200 min⁻¹, Impact drilling, Drilling capacity: in concrete Ø 26 mm, steel Ø 13 mm, wood Ø 30 mm, Weight 2,5 kg

010 600 155



HIGH TORQUE DRILL

PB 9-713HTS

Rated power 750 W, No load speed : 1st gear 475 min⁻¹, 2nd gear 1.000 min⁻¹, Torque: 1st gear 95 Nm, 2nd gear 45 Nm, Keyless chuck Ø 13 mm, Weight 2,8 kg

Use: Drilling in wood with LEVIS drill bits, longer and bigger diameter; Drilling in wood with core bits of bigger diameters; Screwing larger and longer screws in wood in timber structures; Screwing turbo bolt with pre-drilling in concrete, bricks, aerated concrete; Drilling bigger diameters in steel with HSS drill bits with cylindrical connection end.

Users:

Carpenters/Roofers/Editors windows and doors/Editors crash barriers/Metal industry



NEW

INDUSTRIAL DRILLS



PB 1223

Rated power 1.150 W, No load speed 260 min⁻¹ and 480 min⁻¹, Drilling capacity in steel Ø 23 mm, Tool system MK 2, Weight 4,6 kg

010 004 980

PB 1232

Rated power 1.150 W, No load speed 180 min⁻¹ and 310 min⁻¹, Drilling capacity in steel to Ø 32 mm, Tool system MK3, Weight 4,6 kg

010 004 981

MAGNETIC DRILLING MACHINES

NEW

MB 823

Rated power 1.150 W, Morse taper size MK 2, No load speed: 1st gear 260 min⁻¹, 2nd gear 480 min⁻¹, Drilling capacity: with drill bits Ø 23 mm, with drill cores Ø 15 mm - 40 mm, Max. lift 150 mm, Total magnet power 110 W, Magnet retaining force 18.500 N, Baseplate dimensions 178 x 85 mm.

Accessories: Adapter MK2/Weldon 19 mm self lubricating, Punch for core bits, Drill chuck Ø 13 (½"), Adapter Weldon 19/ ½" x 20 NF, Coolant set, Safety chain, Metal case, Weight 13 kg

010 095 133

MB 832

Rated power 1.150 W, Morse taper size MK 3, No load speed: 1st gear 180 min⁻¹, 2nd gear 310 min⁻¹, Drilling capacity: with drill bits Ø 32 mm, with drill cores Ø 15 mm - 50 mm, Max. lift 150 mm, Total magnet power 110 W, Magnet retaining force 18.500 N, Baseplate dimensions 178 x 85 mm.

Accessories: Adapter MK3/Weldon 19 mm self lubricating, Punch for core bits, Drill chuck Ø 13 (½"), Adapter Weldon 19/ ½" x 20 NF, Coolant set, Safety chain, Metal case, Weight 13 kg

010 095 136



CORDLESS DRILLS/DRIVERS

Li-ion



HB 6182-14LT

Li-ion technology, 18 V, L/R, Keyless chuck Ø 10 mm, Auto-lock, No load speed: 1st gear 0–430 min⁻¹, 2nd gear 0–1.600 min⁻¹, Torque settings 18, Torque 40 Nm, Drilling capacity: in steel Ø 10 mm, wood Ø 25 mm, **2 batteries 1,4 Ah (Li-ion)**, Charging time 1 h, Weight 1,25 kg, **Case**

010 005 072



HB 6142-14LT

Li-ion technology, 14,4 V, L/R, Keyless chuck Ø 10 mm, Auto-lock, No load speed: 1st gear 0–420 min⁻¹, 2nd gear 0–1.550 min⁻¹, Torque settings 18, Max. torque 35 Nm, Drilling capacity: in steel Ø 10 mm, wood Ø 15 mm, **2 batteries 1,4 Ah (Li-ion)**, Charging time 1 h, Weight 1,20 kg, **Case**

010 005 073

SMALL ANGLE GRINDERS



BASIC MODEL

HSW 715

Rated power 710 W, No load speed 10.000 min⁻¹, Disc size 115 mm, Adjustable wheel guard, Weight 1,7 kg

010 023 267

HSW 725

Rated power 710 W, No load speed 10.000 min⁻¹, Disc size 125 mm, Adjustable wheel guard, Weight 1,8 kg

010 023 333



HSW 825CE

Rated power 850 W, No load speed 10.000 min⁻¹, Disc size 125 mm, Constant electronics (CE), Adjustable wheel guard, Weight 1,7 kg

010 023 431

NEW



HSW 825RE

Rated power 850 W, No load speed 4.400-10.000 min⁻¹, Disc size 125 mm, Variable speed (RE), Adjustable wheel guard, Weight 1,8 kg

010 023 433



HSW 3115

Rated power 1.010 W, No load speed 12.000 min⁻¹, Disc size 115 mm, Adjustable wheel guard, **AVS - antivibration handle**, Weight 2,4 kg

010 023 310



HSW 3125

Rated power 1.010 W, No load speed 12.000 min⁻¹, Disc size 125 mm, Adjustable wheel guard, **AVS - antivibration handle**, Weight 2,5 kg

010 023 311



HSW 3125CE

Rated power 1.250 W, No load speed 12.000 min⁻¹, Disc size 125 mm, Constant electronics (CE), Adjustable wheel guard, **AVS - antivibration handle**, Weight 2,5 kg

010 023 312



HSW 3125RE

Rated power 1.250 W, No load speed 2.500–12.000 min⁻¹, Disc size 125 mm, Variable speed (RE), Adjustable wheel guard, **AVS - antivibration handle**, Weight 2,5 kg

010 023 313



Rotation of the protective shield
European patent
by Perles

HSW 3000, HSW 6000:

- Power tools made in EU
- High power of electromotor ensures effective use of grinders
- Additional dust protection ensures long life expectancy of the electromotor
- Good ergonomic construction of the body provides safe and comfortable usage.
- Soft start electronics prevents impact when the tool is started
- Solid and small gear housing made of aluminum alloy allows better access to hard reachable places
- Steel milled gears instead of sintered ensures smoother running and long service life even in the most difficult working conditions
- Rotation of the protective shield without the use of additional tools (**European Patent by Perles**) enables rapid adaptation to working conditions
- Additional rubber coating on the motor housing for better grip
- Models with higher power are equipped with antivibration handle which reduces vibrations transfer to the user by up to 80%
- Motor housing made of polyamide reinforced with 30% of glass fiber provides high impact resistance
- Rubber cord provides a long service life even in increasing number of bending/folding

NEW



HSW 3125CET

Rated power 1.400 W, No load speed 12.000 min⁻¹, Disc size 125 mm, **Tacho constant electronics** (CET), Adjustable wheel guard, **AVS - antivibration handle**, Weight 2,6 kg

010 023 374

ANGLE GRINDERS



HSW 1-6256EK

Rated power 2.100 W, No load speed 6.500 min⁻¹, Disc size 230 mm, Soft start (E), Weight 5,2 kg

010 023 336



HSW 6206K

Rated power 2.000 W, No load speed 6.500 min⁻¹, Disc size 230 mm, Adjustable wheel guard, Weight 5,2 kg

010 023 090



HSW 6208K

Rated power 2.000 W, No load speed 8.200 min⁻¹, Disc size 180 mm, Adjustable wheel guard, Weight 5,0 kg

010 023 246



HSW 6236EK

Rated power 2.300 W, No load speed 6.500 min⁻¹, Disc size 230 mm, Soft start (E), Adjustable wheel guard, **AVS - antivibration handle**, Weight 5,2 kg

010 023 182



HSW 6238EK

Rated power 2.300 W, No load speed 8.200 min⁻¹, Disc size 180 mm, Soft start (E), Adjustable wheel guard, **AVS - antivibration handle**, Weight 5,0 kg

010 023 183



HSW 6256EK

Rated power 2.500 W, No load speed 6.500 min⁻¹, Disc size 230 mm, Soft start (E), Adjustable wheel guard, **AVS - antivibration handle**, Weight 5,2 kg

010 023 184



HSW 6276CEK

Rated power 2.700 W, No load speed 6.500 min⁻¹, Disc size 230 mm, Soft start (E), Adjustable wheel guard, **AVS - antivibration handle**, Weight 5,2 kg

010 023 186

METAL CUT-OFF SAW



TSP-1 355

Suitable for quick and accurate cutting of steel and non-ferrous profiles, Rated power 2.300 W, No load speed 3.800 min⁻¹, Disc size Ø 355 mm, Cutting capacity: steel bars up to Ø 65 mm, tube up to Ø 120 mm, Steel profile up to 110x165 mm, Weight 17,5 kg

010 023 242

ANGLE POLISHERS

UP 3142RE

Rated power 1.400 W, No load speed 650-2.200 min⁻¹, Disc size Ø 150 mm, Weight 2,2 kg

010 023 218

Car industry (car body painters): polishing of varnish (accessories: polishing foams with diameters from Ø 80 mm to Ø 220 mm)

Shipbuilding: polishing of plastics (woolen polishing disc with diameters from Ø 180 mm to Ø 220 mm)

Metal industry: polishing of metals for attaining high gloss (felt and pressed cloths)

Wood industry: brushing of wood to attain "old" appearance (metal brushes with diameters from Ø 80 mm on)



UP 4162REK

Rated power 1.600 W, No load speed 900-3.000 min⁻¹, Disc size Ø 180 mm, Weight 3,5 kg

010 023 104



UP 3000, 4000

- Power tools made in EU
- Variable speed control provides a wide range of application.
- Universal M14 thread.
- Constant speed electronics maintain performance even under load
- Automatic overload protection switches down power when required

DIE GRINDERS



HSG 18

Rated power 500 W, No load speed 27.000 min⁻¹, Collet chuck Ø 6 mm, Weight 2 kg

010 023 105



HSG 18RE

Rated power 800 W, No load speed 9.000-30.000 min⁻¹, Collet chuck Ø 6 mm, Weight 2 kg

010 023 089

NIBLER



BN 18

Rated power 500 W, No load strokes 2400 min⁻¹, Cutting capacity in steel sheet metal up to 2 mm thick (strength to 400 N/mm²), Cutting capacity in Al sheet metal up to 2,5 mm thick (strength to 200 N/mm²), Weight 2,4 kg

010 040 147

SHEET METAL SHEARS



BS 18

Rated power 500 W, No load strokes 2400 min⁻¹, Cutting capacity in steel sheet metal up to 2 mm thick (strength to 400 N/mm²), Cutting capacity in Al sheet metal up to 2,5 mm thick (strength to 200 N/mm²), Weight 2,4 kg

010 050 169

PORTABLE EDGE MILLING & CHAMFER MACHINES



MF 1225RE (30°)

Rated power 1.250 W, No load speed 2500-12000 min⁻¹, Bevel depth 0-5 mm/30°, Milling head Ø 29 mm, Weight 3,0 kg

010 085 369



MF 1225RE (45°)

Rated power 1.250 W, No load speed 2500-12000 min⁻¹, Bevel depth 0-5 mm/45°, Milling head Ø 29 mm, Weight 3,0 kg

010 085 346



MF 2370E

Rated power 2.300 W, No load speed 6500 min⁻¹, Bevel depth 0-7 mm/45°, Milling head Ø 40 mm, Weight 8,4 kg

010 085 343

- Power tools made in EU
- Fast and constant bevel cutting on straight and profiled ferrous and non-ferrous material edges.
- Also suitable for stainless steel and tool steel-correct cutting insert selection required.



CIRCULAR SAWS



KS 51

Rated power 1.200 W, No load speed 5.000 min⁻¹, Cutting depth: at 90° to 51 mm, at 45° to 34 mm, Bevel cut 90°-45°, Saw blade size Ø 153 mm, Weight 3,4 kg

010 060 794

CIRCULAR SAWS:

- Power tools made in EU
- Ergonomic shape of the handle provides optimal control of machine
- Cutting depth and angle adjustment allows to meet work requirements
- The stiff aluminum guide plate provides optimal and precise cuts
- Motor housing made of polyamide reinforced with 30% of glass fiber provides high impact resistance



KS 55

Rated power 1.300 W, No load speed 5.000 min⁻¹, Cutting depth: at 90° to 55 mm, at 45° to 38 mm, bevel cut 90° - 45°, Saw blade size Ø 160 mm, Weight 3,4 kg

010 060 751



KS 170

Rated power 1.500 W, No load speed 4.700 min⁻¹, Cutting depth: 90° to 70 mm, at 45° to 49 mm, Bevel cut 90°-45°, Saw blade size Ø 200 mm, Weight 6,3 kg

010 060 752

MITRE SAWS



TKS 1612

Rated power 1.600 W, Asynchronous motor, No load speed 3.000 min⁻¹, Max cutting height at 90° 170x70 mm, Tilting saw blade 0-45°, Mitre cut 0-50°, Max. cutting depth on the table 55 mm, Saw blade size Ø 305 mm, Weight 25 kg

010 060 802

PLANER



HOB 882

Rated power 850 W, No load speed 13.000 min⁻¹, Planer width 82 mm, Planer depth 0-3,5 mm, Rebate depth 0 -24 mm, Weight 2,8 kg

010 065 070

BELT SANDER



BSC 2-675

Rated power 650 W, Sanding belt size 75x533 mm, Belt speed 320 m/min, Weight 2,9 kg

010 031 360

OSCILATING SANDER



VS 525

Rated power 450 W, Free oscillation rate 16.000 min⁻¹, Oscillation 2,5 mm, Ordinary sanding paper 115 x 225 mm, Hook and loop sanding paper 115 x 230 mm, Dust bag, Weight 2,9 kg

010 031 362

PLUNGE ROUTERS



OF 3-808

Rated power 850 W, No load speed 25.000 min⁻¹, Cutting depth 0-50 mm, 3 different cutting depths, Collet chuck Ø 8 mm, Accurate straight guide with adjustable guide shoes, Fine depth adjustment (0.1mm), Dust suction attachment (sawdust) can be installed on both sides, Template guide Ø 30 mm, Weight 2,8 kg

010 085 381



OF 3-808RE

Rated power 1.010 W, No load speed 9.000-27.000 min⁻¹, Cutting depth 0-50 mm, 3 different cutting depths, Collet chuck Ø 8 mm, Accurate straight guide with adjustable guide shoes, Fine depth adjustment (0,1 mm), Dust suction attachment (sawdust) can be installed on both sides, Template guide Ø 30 mm, Weight 2,8 kg

010 085 382



OF 9

Rated power 1.010 W, No load speed 24.000 min⁻¹, Plunge capacity 0-50 mm, Presetting of three different cutting depths, Collet chuck Ø 8 mm, Accurate adjustable parallel fence guide, Lower and upper dust extraction adapters, Fine depth adjustment (0,1 mm), Guide protection, Template guide Ø 30mm, Weight 2,9 kg

010 085 340



OF 9E

Power 1.300 W, with an electronic regulator, No load speed 6000 - 27.000 min⁻¹, Motor overload protection, plunge capacity 0-50 mm, Pre-setting of three different cutting depths, Collet chuck Ø 8 mm, Accurate adjustable parallel fence guide, Lower and upper dust extraction adapters, Fine depth adjustment (0,1 mm), Guide protection, Template guide Ø 30 mm, Weight 2,9 kg

010 085 341



OF:

• Products made in EU

- Rough and precise setting of cutting depth.
- Presetting of 3 different cutting depths.
- Simple spindle lock.
- Rubberized handles.
- Electronic tachometer provides constant speed regulation especially under heavy load (OF 9E)
- Tachometric way of measuring the number of revolutions provides constant speed under various speed (OF9E)



MIXERS

• All mixers are made in EU

- Optimum ergonomics of the machine: mixing height can be adjusted by fixing the paddle
- Easy to use: Paddle can be replaced without the use of additional tools
- Power switch allows soft start of mixing to prevent material spraying from the container
- Inlet air cooling is designed to prevent the entry of substances (dirt) from ambient; air exhaust does not affect the mixing material
- Gearbox is robust designed for long life and mixers in heavy conditions

PM 6- 1000E

With stirrer VK 120; Power 1.000 W, Electronic switch, Rated speed 0-650 min⁻¹, Mixer retention M 14, Weight 3,2 kg

010 009 291

ME 1250 E

With stirrer MK 160; Power 1.250 W, No load speed: 1st gear 0-170 min⁻¹ and 2nd gear 0-340 min⁻¹, Max. mixing volume 90 l, Mixer retention: M14, Weight 4,6 kg.

010 009 316



DIAMOND TOOLS

NEW

WALL CHASER

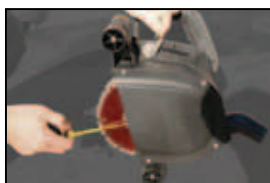


WSF 2360

Rated power 2.300 W, Cutting depth and width can be adjusted linearly, Electronics, No load speed 6.500 min⁻¹, Disc size 180 mm, Cutting depth 3-60 mm, Cutting width 15-44 mm, Weight 7,6 kg, **2 UN-T diamant cutting discs, key, inbus key, case** **010 085 380**

Precision work

- variable cutting depth and width enable adjustment to any working conditions



- quick setting of depth of cut



- parallel outside rollers provide precision cuts by a lath



Exceptional power

- extremely powerful 2300 W motor provides high work capacity and speed



Safety and long service life

- electronics provides soft start and protects the power tool against overloading
- safety lock button provides safe work
- efficient motor cooling
- ball bearings in rollers for easy power tool guidance



Standard equipment:

- 2 UN-T diamond cutting discs
- disc replacement spanner
- allen key

CONCRETE GRINDERS



DBS 125

• Made in EU

• Powerful 1400W motor with electronic module enables constant speed, long life and effective use
• Overload protection protects the motor against overheating
• Special design for effective material removal and use of different grinding discs
• Disc height adjustment enables optimal disc position in case of disc wear out or protection rubber wear out
• Special dust protection enables long motor and bearing life
• Dust spout Ø35,5mm for effective dust removal with vacuum cleaner
• Movable guard enables exact material removal in corners

• Adjustable, ergonomic front handle positioned for perfect balance
• Easy rubber protection exchange
• Switch with lock on function
• Suitable for use in basic construction applications, for surface preparation and final surface straitening
• Lightweight design suitable for use on walls and ceiling



DBS 125

Rated power 1.400 W, No load speed 8.000 min⁻¹, Disc size Ø 125 mm, Height of disc settings 4,5 mm, weight 2,8 kg, Adjustable front handle 30°

010 023 351

Standard accessory:

Grinding disc "concrete", grinding disc "abrasive", metal case



DBS 125-20

Rated power 2.000 W, No load speed 8.000 min⁻¹, disc size Ø 125 mm, Height of disc settings 4,5 mm, Weight 3,5 kg, Adjustable front handle 30°

010 023 384

Standard accessory:

Grinding disc "concrete", grinding disc "abrasive", metal case



DBS 125-20

• Made in EU

• Powerful 2.000W motor with electronic module enables constant speed, long life and effective use
• Overload protection protects the motor against overheating
• Special design for effective material removal and use of different grinding discs
• Disc height adjustment enables optimal disc position in case of disc wear out or protection rubber wear out
• Special dust protection enables long motor and bearing life
• Dust spout Ø35,5mm for effective dust removal with vacuum cleaner
• Movable guard enables exact material removal in corners
• Ergonomic front handle positioned for perfect balance
• Easy rubber protection exchange
• Switch with lock off and lock on function
• Adjustable main handle enables ergonomic use in all positions
• Suitable for use in basic construction applications, surface preparation and final surface straitening
• It can be also used together with floor guide BF180

DBS 180

Rated power 2.700 W, No load speed 6.500 min⁻¹, Disc size Ø 180 mm, Height of disc settings 4,5 mm, Weight 6,2 kg, Adjustable front handle 30°
010 023 383

Standard accessory:

Grinding disc "concrete", grinding disc "abrasive", metal case





DBS 180

- **Made in EU**

- Powerful 2.700W motor with electronic module enables constant speed, long life and effective use
- Overload protection protects the motor against overheating
- Special design for effective material removal and use of different grinding discs
- Disc height adjustment enables optimal disc position in case of disc wear out
- Special dust protection enables long motor and bearing life
- Dust spout Ø35,5 mm for effective dust removal with vacuum cleaner
- Ergonomic front handle positioned for perfect balance
- Easy protection brushes exchange
- Switch with lock off and lock on function
- Adjustable main handle enables ergonomic use in all positions
- Suitable for use in basic construction applications, surface preparation and final surface straightening

WET DIAMOND DRILL MACHINE

- Made in EU
- Extremely fast and accurate drilling in all building materials like:
 - natural stone – granite, marble
 - concrete, bricks
 - tiles, clinker
- Ideal drill for installation work and stone workers.
- Adjustable rotation speed for optimal drilling in different materials with different drill diameters
- Wet drilling for low drill bit wear out.
- Switch with lock-on button for permanent use
- PRCD safety switch for FI protection integrated in the cable
- Stainless steel spindle for corrosion free long life use of the drill
- Additional side handle with depth stop for easier use of the machine
- Adjustable water supply with on/off valve
- Available with adapter 1/2"UNF _ R1/2" and drilling support for easy start



010 005 100



B9W-7

Input power 700 W, Rotation speed 0-8.000 min⁻¹, Drilling capacity 25 mm, Clamping diameter 43 mm, Spindle connection 1/2" UNF, Weight 2,5 kg

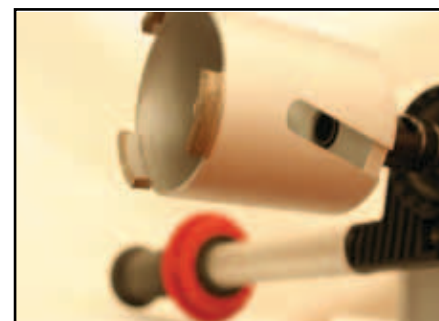
Standard accessory:

Core Ø 6mm, Ø 14mm (Ø15mm CH), adapter 1/2"x20UNF/R1/2", metal case, drilling support

DRY DIAMOND DRILL MASCHINE



Standard accessory: metal case, adapter 1/2"x20UNF/M16, core M16/Ø68,M16/ Ø82, drill bit B10



B 9D-12

Input power 1200 W, Rotation speed 1st gear 0-1.100 min⁻¹, 2nd gear 0-2.100 min⁻¹, Drilling capacity 125 mm, Clamping diameter 43 mm, Spindle connection 1/2" x 20 UNF, Weight 3,4 kg

010 005 099

- Made in EU
- Powerful 1200W motor
- Patented overload clutch with rotating balls, without any heat rise, protects user against injury and transmission against breakage
- Fast and accurate drilling in all building materials like:
 - concrete
 - masonry
 - sand-lime-bricks
 - tiles
- Adjustable rotation speed for optimal drilling in different materials with different drill diameters
- Dry drilling machine for use in places where presence of water is not allowed
- Switch with lock-on button for permanent use
- Closed handle for drilling force transmission to the center of the drill-core
- Different clamping systems are available: keyed and key-less chuck, M16, M18
- Longer additional side handle for easier use of the machine

TILE CORE DRILL



WFB 3140RE, wet drilling

Rated power 1400 W, No load speed 2.500–8.000 min⁻¹, PRCD (FI), Thread connection M 16, Drilling capacity Ø 82 mm, Weight 2,8 kg

010 005 132

Standard accessory:

metal case, drilling support

Accessory: case with cores M14/ Ø20, 27, 35, 40, 50, 65

- **Made in EU**
- Powerful 1.400W motor with electronic module enables constant speed, long life and effective use
- Overload protection protects the motor against overheating
- Adjustable speed for proper speed setting according to core diameter
- Special dust protection enables long motor and bearing life
- PRCD safety switch for FI protection integrated in the cable
- Stainless steel spindle for corrosion free long life use of the drill
- Ergonomic front handle positioned for perfect balance
- Movable tile fixing system
- Switch with lock on function
- Suitable for tiles, granite, marble, ...

VIBRATION TOOLS

FLEXIBLE SHAFT VIBRATOR



TBR 20
Voltage 230 V, Rated power 2.000 W, No load speed 12.000 min⁻¹, Weight 4 kg

010 211 289

We have given an innovative and very deliberate design to the Flexible Shaft Vibrator, which puts it **in front of any competition**. Low centre of gravity provides an exceptional stability, rubber shock absorbers increase its robustness, exchangeable filters, easy maintenance, a belt for easy carrying. **Result:** long service life and extremely user-friendly product.



POKERS FOR FLEXIBLE SHAFT VIBRATOR



AMX1- 25/4
Poker diameter 25 mm, Lenght 4 m, Capacity 8 m³/h, Centrifugal force 1.000 N, Weight 8 kg

010 211 262



AMX1- 34/4
Poker diameter 34 mm, Lenght 4 m, capacity 10 m³/h, Centrifugal force 1.500 N, Weight 9,5 kg

010 211 266



AMX1- 43/4
Poker diameter 43 mm, Lenght 4 m, Capacity 20 m³/h, Centrifugal force 3.000 N, Weight 10 kg

010 211 270



AMX1- 50/4
Poker diameter 50 mm, Lenght 4 m, Capacity 30 m³/h, Centrifugal force 3.500 N, Weight 11 kg

010 211 272

FREQUENCY CONVERTERS AND POKERS



CAF1- 150M
Single-phase, Input voltage 1x230 V (50 Hz), Output voltage 3x42 V (200 Hz), Motor power 2,0 kW, Generator power 1,5 KVA, No of connections 2, Current 21 A, Weight 25 kg

010 201 138



CAF1- 250M
Single-phase, Input voltage 1x230 V (50 Hz), Output voltage 3x42 V (200 Hz), Motor power 3,0 kW, Generator power 2,5 KVA, No of connections 2, Current 35 A, Weight 35 kg

010 201 139



CAF1- 300T
Therree-phase, Input voltage 3x400 V (50 Hz), Output voltage 3x42 V (200 Hz), Motor power 3,0 kW, Generator power 2,5 KVA, No of connections 3, Current 42 A, Weight 35 kg

010 201 140



CAF1- 500T
Therree-phase, input voltage 3x400 V (50 Hz), Output voltage 3x42 V (200 Hz), Motor power 5,0 kW, Generator power 4,4 KVA, No of connections 4, 70 A, Weight 55 kg

010 201 141



GAF1- 1500H
Motor Honda, 1,5 KVA, Output voltage 3 x 42 V, 200 Hz, No of connections 2, Current 21 A, Weight 29 kg

010 201 143



GAF1- 2500H
Motor Honda, Generator power 2,5 KVA, Output voltage 3 x 42 V, 200 Hz, No of connections 3, Current 35 A, Weight 33 kg

010 201 144



AV1- 500HD
Poker diameter 50 mm, Input current 8 A, Rated power 490 W, No of vibrations 12.000 min⁻¹, capacity 30m³/h, Work area 110 cm, Centrifugal force 3.300 N, Weight 12 kg, Cable 10 m, Rubber hose 5 m, **HEAVY DUTY**

010 211 251



AV1- 500HDRC
Poker diameter 50 mm, Input current 8 A, Rated power 490 W, No of vibrations 12.000 min⁻¹, capacity 30m³/h, Work area 110 cm, Centrifugal force 3.300 N, Weight 12 kg, Cable 10 m, Rubber hose 5 m, **HEAVY DUTY, RUBBER CAP**

010 211 252



AV1- 600HD
Poker diameter 60 mm, Input current 14 A, Rated power 870 W, No of vibrations 12.000 min⁻¹, capacity 35 m³/h, Work area 125 cm, Centrifugal force 6.200 N, Weight 16,5 kg, Cable 10 m, Rubber hose 5 m, **HEAVY DUTY**

010 211 255



AV1- 600HDC

Poker diameter 60 mm, Input current 14 A, Rated power 870 W, No of vibrations 12.000 min⁻¹, capacity 35 m³/h, Work area 125 cm, Centrifugal force 6.200 N, Weight 16,5 kg, Cable 10 m, Rubber hose 5m, **HEAVY DUTY, RUBBER CAP**

010 211 256



AV1- 700HD

Poker diameter 70 mm, Input current 20 A, Rated power 1.650 W, No of vibrations 12.000 min⁻¹, capacity 40 m³/h, Work area 140 cm, Centrifugal force 8.000 N, Weight 18 kg, Cable 10 m, Rubber hose 5 m, **HEAVY DUTY**

010 211 259



AV1- 700HDC

Poker diameter 70 mm, Input current 20 A, Rated power 1.650 W, No of vibrations 12.000 min⁻¹, capacity 40 m³/h, Work area 140 cm, Centrifugal force 8.000 N, Weight 18 kg, Cable 10 m, Rubber hose 5 m, **HEAVY DUTY, RUBBER CAP**

010 211 260

ELECTRONIC FREQUENCY CONVERTER AND POKERS



EFC1- 01

Input voltage 230-240 V, Input frequency 50-60 Hz, Output voltage 230V/3, Output frequency 200 Hz, Output power 1,5 kW, Protection IP 65, Weight 3,8 kg

010 201 142



EVP1- 380TP

Voltage 230 V, Poker diameter 38 mm, Hose lenght 5 m, Cable lenght 15 m, Current 0,9 A, No of vibrations 12.000 min⁻¹, Weight 7,5 kg

010 211 276



EVP1- 500TP

Voltage 230 V, Poker diameter 50 mm, Hose lenght 5 m, Cable lenght 15 m, Current 1,2 A, No of vibrations 12.000 min⁻¹, Weight 10 kg

010 211 278



EVP1- 600TP

Voltage 230 V, Poker diameter 60 mm, Hose lenght 5 m, Cable lenght 15 m, Current 1,3 A, No of vibrations 12.000 min⁻¹, Weight 12,8 kg

010 211 280



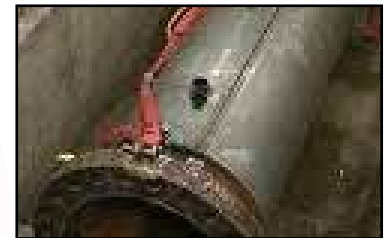
EVP1- 700TP

Voltage 230 V, Poker diameter 70 mm, Hose lenght 5 m, Cable lenght 15 m, Current 1,3 A, No of vibrations 12.000 min⁻¹, Weight 12,8 kg

010 211 282

LOW VOLTAGE TOOLS

- Power tools made in EU
- Suitable for AC or DC use
- Maximum operator safety via 48 V supply voltage
- **Ideal solution for use in extremely wet, damp and high humidity environments.**



48 V

72 V



HSW 3115 48 V

Voltage 48 V, Rated power 1.010 W, No load speed 12.000 min⁻¹, Disc size Ø 115 mm, Adjustable wheel guard, **AVS-antivibration side handle**, Weight 2,4 kg

010 023 330



HSW 3115 72 V

Voltage 72 V, Rated power 1.010 W, No load speed 12.000 min⁻¹, Disc size Ø 115 mm, adjustable wheel guard, **AVS- antivibration side handle**, weight 2,4 kg

010 023 327



HSW 6206K 48 V

Voltage 48 V, Rated power 2.000 W, No load speed 6.500 min⁻¹, Disc size Ø 230 mm, Adjustable wheel guard, Weight 5,2 kg

010 023 173



HSW 6206K 72 V

Voltage 72 V, Rated power 2.000 W, No load speed 6.500 min⁻¹, Disc size Ø 230 mm, Adjustable wheel guard, Weight 5,2 kg

010 023 258



HSG 18 48 V

Voltage 48 V, Rated power 500 W, No load speed 27.000 min⁻¹, Collet chuck Ø 6 mm, Weight 2 kg

010 023 172

HSG 18 72 V

Voltage 72 V, Rated power 500 W, No load speed 27.000 min⁻¹, collet chuck Ø 6 mm, weight 2 kg

010 023 031

PB 9-713 48 V

Voltage 48 V, Rated power 750 W, Electronic switch, L/R, No load speed: 1st gear 0-1.200 min⁻¹, 2nd gear 0-3.200 min⁻¹, Chuck size Ø 13 mm, Drilling capacity: in steel Ø 13 mm, in wood Ø 40 mm, Weight 2,5 kg

PB 9-713 72 V

Voltage 72 V, Rated power 750 W, Electronic switch, L/R, No load speed: 1st gear 0-1.200 min⁻¹, 2nd gear 0-3.200 min⁻¹, Chuck size Ø 13 mm, Drilling capacity: in steel Ø 13 mm, in wood Ø 40 mm, Weight 2,5 kg

PERLES

CHALLENGE OF PROFESSIONALS

Hidria Perles, d.o.o.

Savska loka 2

4000 Kranj

tel.: +386 4 2076 402

e.: perles@hidria.com

www.perles.com



www.facebook.com/Perles.professional

www.twitter.com/Perlestools